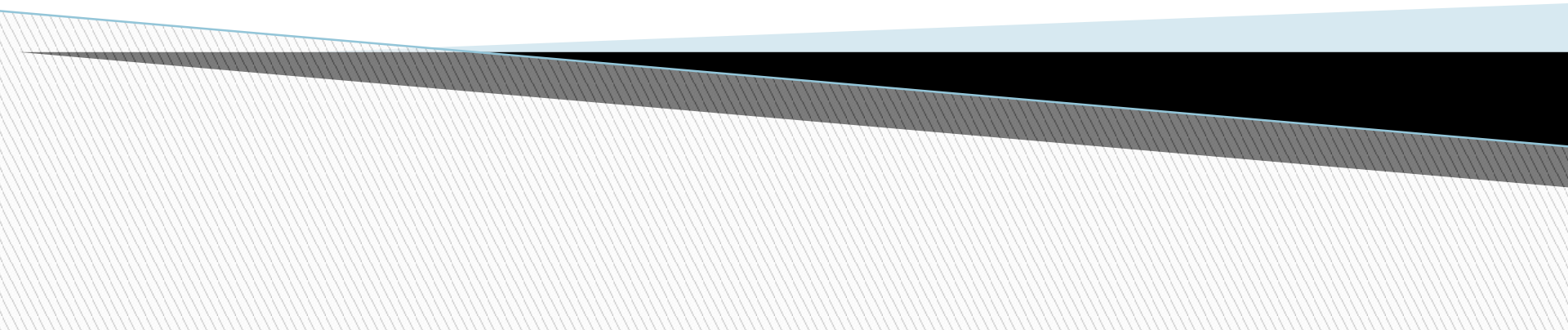


Communicating with NWR through the “Chain of Command”

*What avenue of communication should I use
with a concern?*



Chain of Command

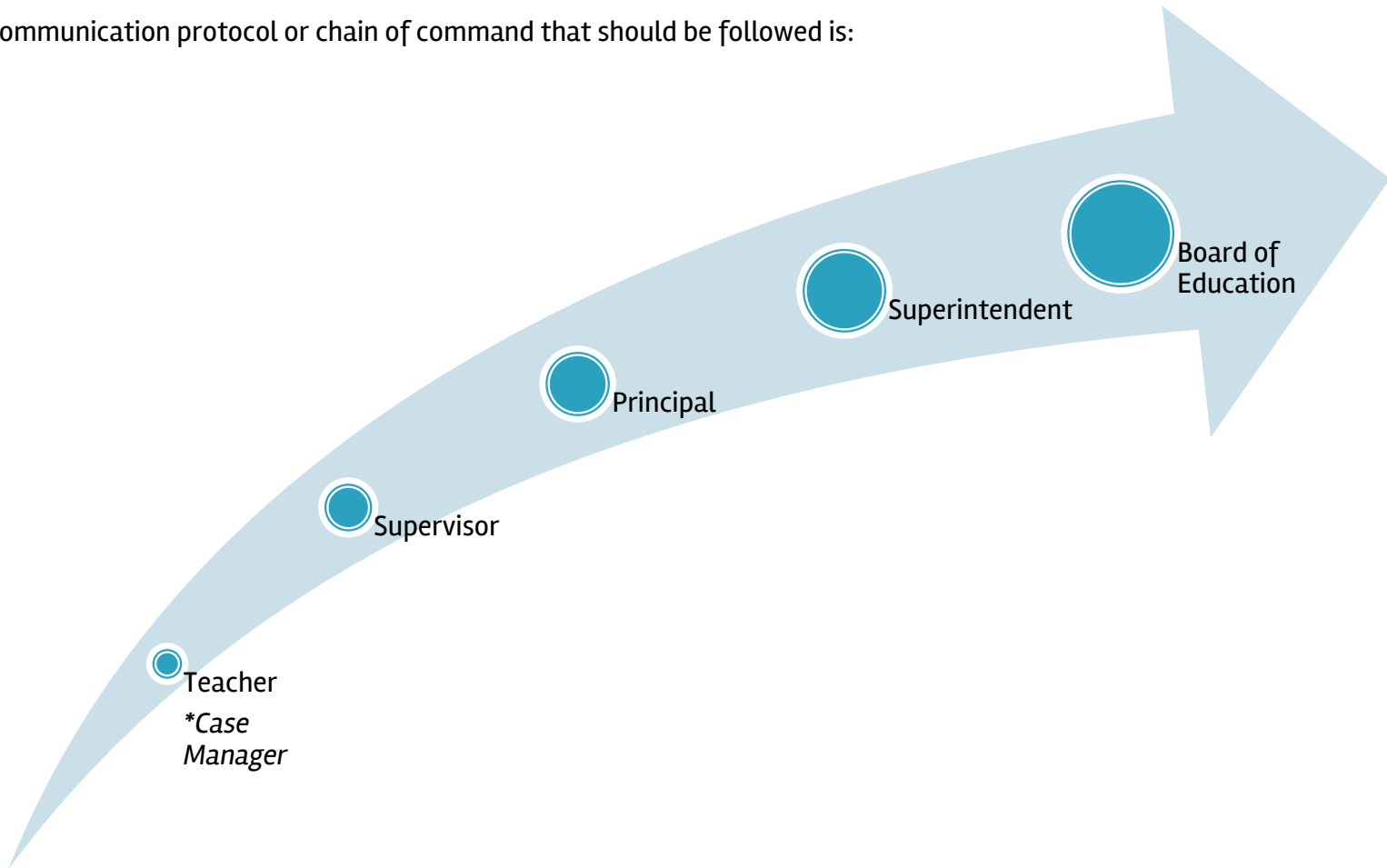
NWR is committed to ensure open lines of communication between the school and community. The most effective communication protocol establishes a clear chain of command when a concern need to be brought to the school's attention. Without a clear communication protocol, a simple concern could become a major problem often due to lack of knowledge and/or information.

NWR District Policies # 1100 (District Organization) and #0146 (Board Member Authority) outlines procedures that defines a communication protocol or chain of command to follow for conflict resolution. Bypassing levels in the chain of command often creates additional problems and extends the timeline for resolution.

If a parent or resident brings a concern to anyone in the chain of command, out of sequence, the concern should be sent back to the proper level for resolution.

On Matters Involving Curriculum & Instruction in Grades 7–12

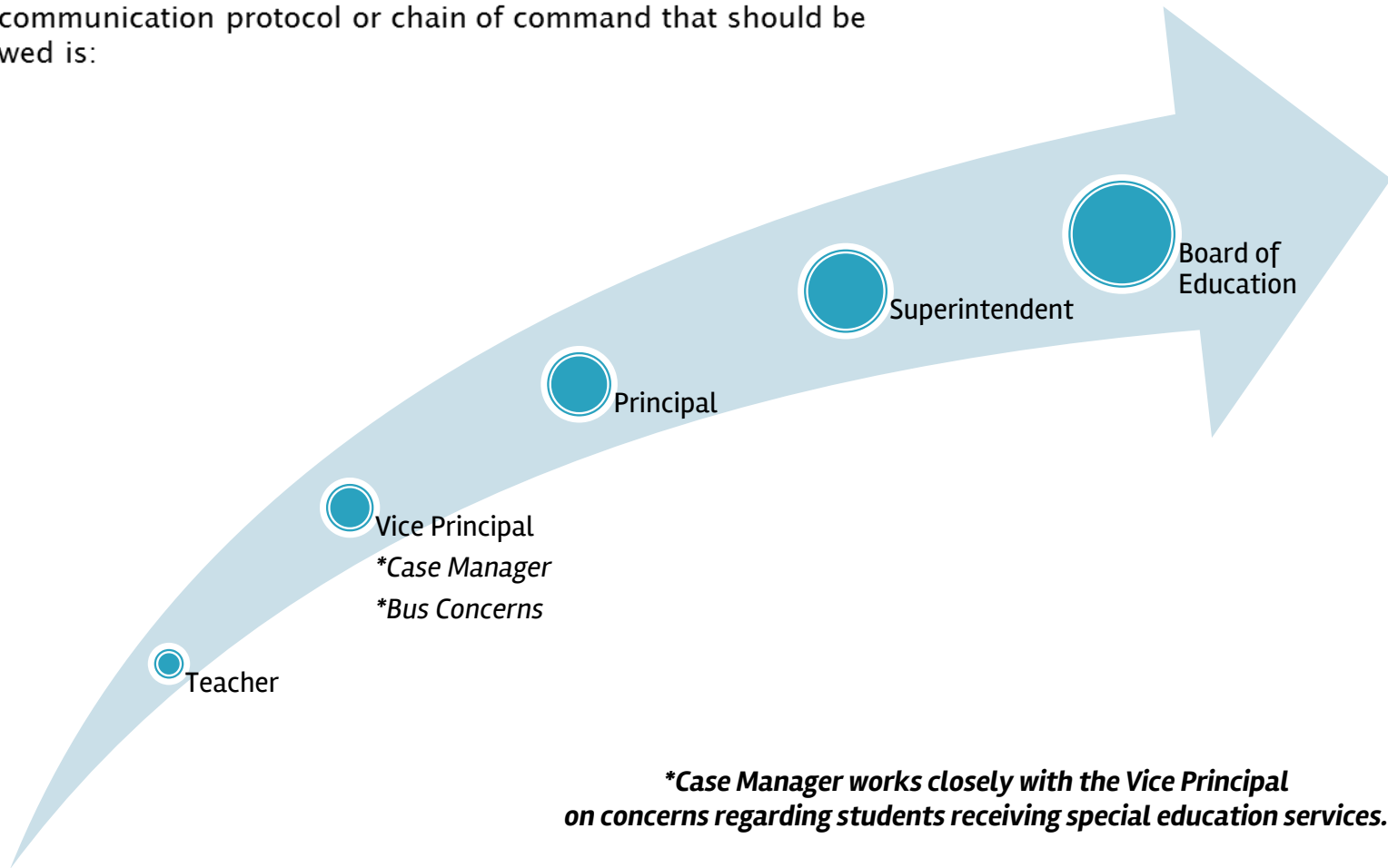
The communication protocol or chain of command that should be followed is:



****Protocol includes a Case Manager for resolution of concerns for students receiving special education services.***

On Matters Involving Student Discipline in Grades 7–12

The communication protocol or chain of command that should be followed is:

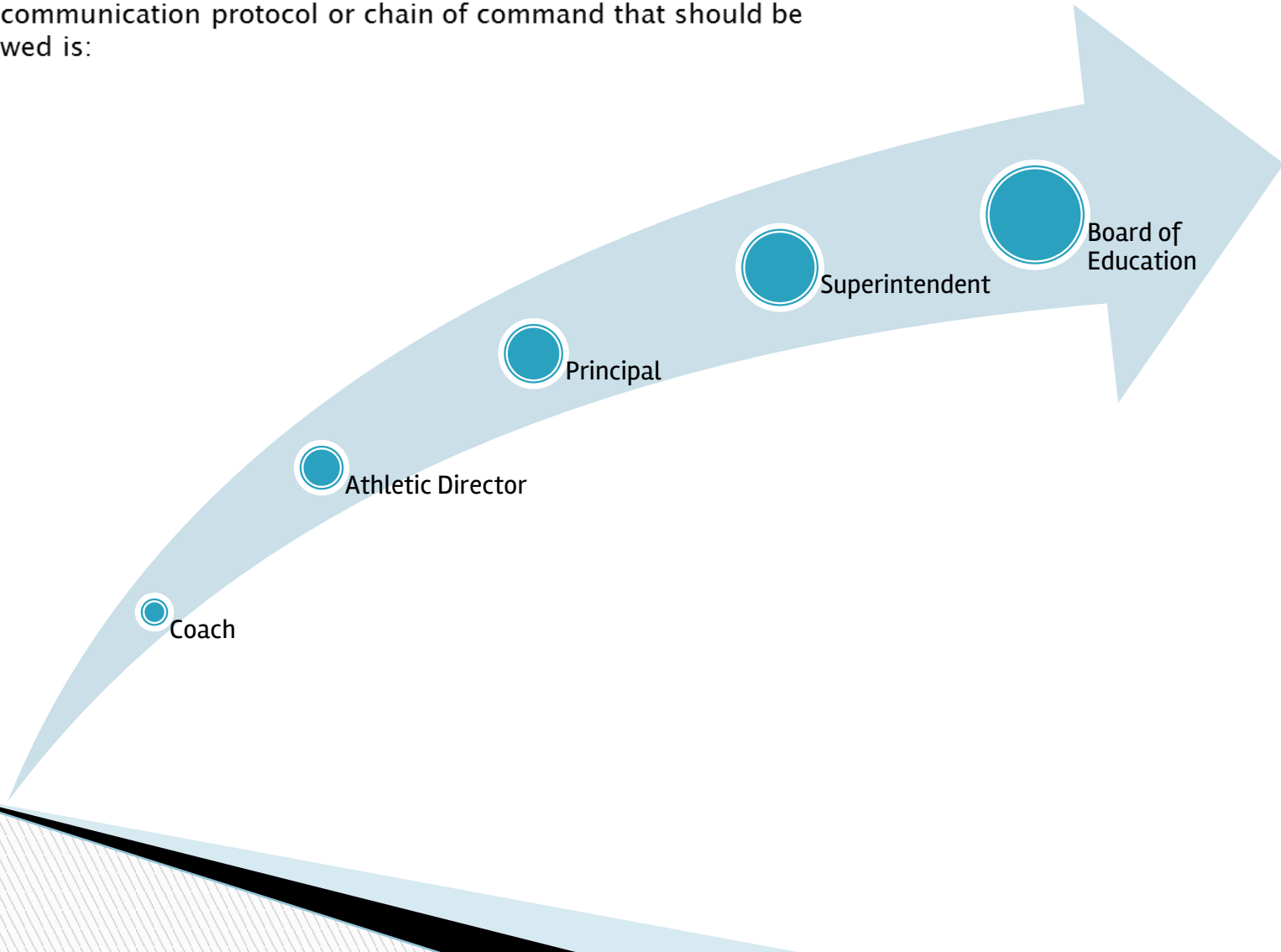


****Case Manager works closely with the Vice Principal on concerns regarding students receiving special education services.***

****Bus concerns are reported first to the Vice Principal.***

On Matters Involving Athletics

The communication protocol or chain of command that should be followed is:



On Matters Involving Student Activities in Grades 7–12

The communication protocol or chain of command that should be followed is:

